



New Zealand Accommodation Journeys Summer (Oct-Apr)

Accommodation type: High-quality backpacker hostels, wilderness lodges and cabins.

Quad-share accommodation is included with our Stray Journeys tours, with single and twin room upgrades available on request and subject to availability.

Please note: Single-sex accommodation is not guaranteed.

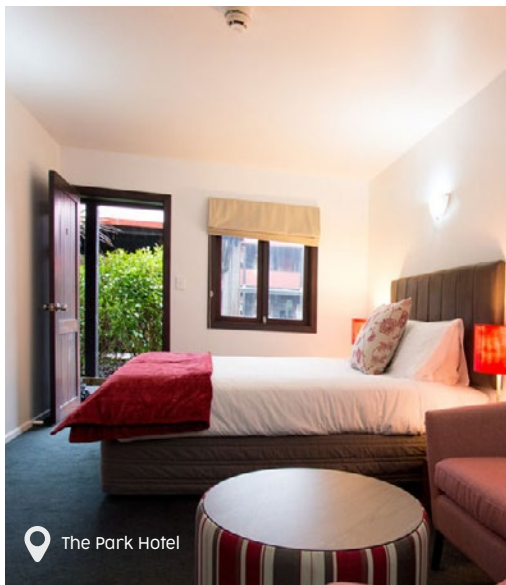
Off-Peak (May - September): Dorm-share (4-10 bed) accommodation is included with our New Zealand Journeys Off Peak tours with single and twin room upgrades available on request. Please refer to the New Zealand Freestyle Passes Accommodation List.



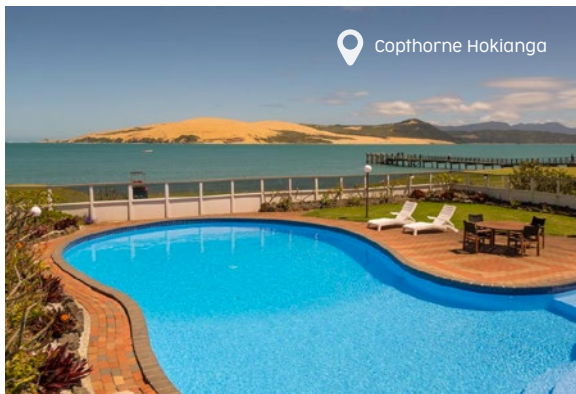
Blue Duck Lodge



Four Canoes, Rotorua



The Park Hotel



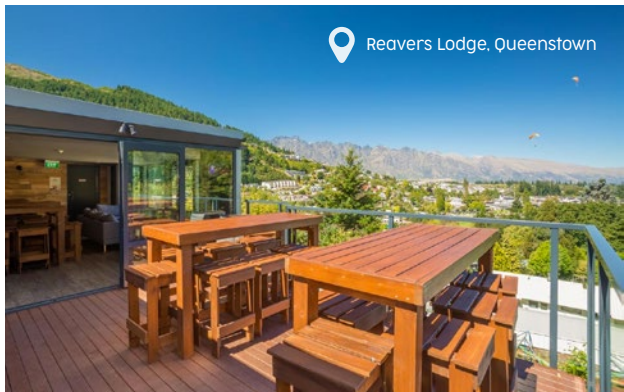
Copthorne Hokianga



All Stars Inn, Christchurch



Doubtful Sound Overnight Cruise



Reavers Lodge, Queenstown



Greenacres Motel, Hanmer Springs

North Island

Auckland
Nomads Auckland

Paihia
Peppertree Lodge

Hokianga
Copthorne Hotel & Resort

Rotorua
Four Canoes hotel

Tongariro National Park
The Park Hotel Ruapehu

Blue Duck Station (Whakahoro)
Blue Duck Lodge

Wellington
Nomads Capital

South Island

Abel Tasman (Mārahau)
The Barn

Franz Josef
Rainforest Retreat

Makarora
Wonderland Makarora Lodge

Doubtful Sound
Real Journeys: Doubtful Sound
Overnight Cruise

Queenstown
Reavers Lodge

Mount Cook
Mount Cook Lodge

Christchurch
All Stars Inn on Bealey

Hanmer Springs
Greenacres Motel

Kaikōura
Dusky Lodge & Backpackers

Picton (Mackinnon Tour)
The Villa Backpackers Lodge