



New Zealand Accommodation Freestyle Passes

This is a list of Stray's preferred accommodation that can be booked through your Stray Mate App. We guarantee a dorm bed but will try our best to get you a twin or double room where possible if requested.

Accommodation type: Comfortable backpacker hostels, wilderness lodges and cabins.

How to book:



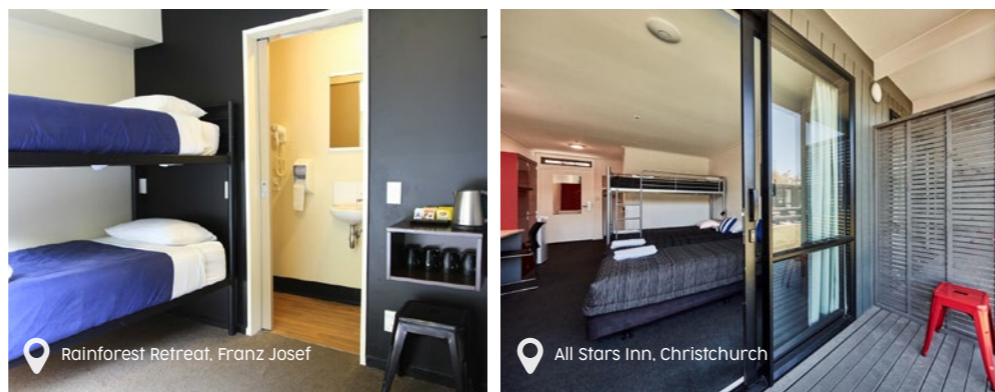
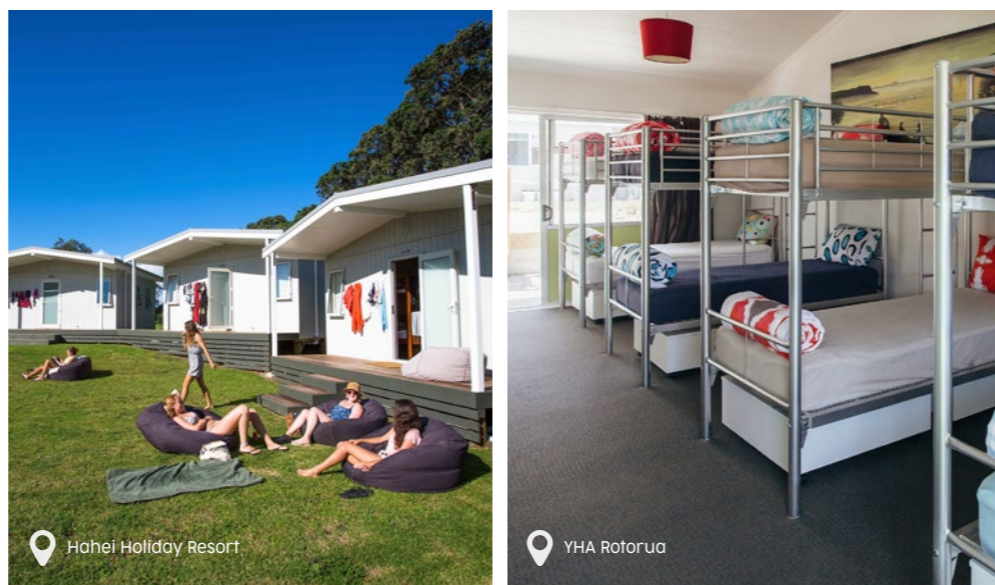
Login to your Stray Mate App and select the destination where you want to stay.



Choose your hostel, dates and room type, and then book using your credit card. If you can't do this for any reason, chat to your driver and they can assist you.

Please note: Single sex accommodation is not guaranteed. In peak season (Nov - March) twin and double rooms may have limited availability.

Journeys Off-Peak (May-Sep) is hosted on the New Zealand Freestyle Network. Dorm-share (4-10 bed) accommodation is included for each night of the itinerary with single and twin room upgrades available on request, subject to availability.



North Island

Auckland
Nomads Auckland (Southbound)
Base - ACD (Northbound)

Paihia
Base Backpackers Paihia

Hahei
Hahei Holiday Resort

Rotorua
YHA Rotorua

Raglan
Raglan Sunset Motel: Backpackers

Lake Aniwhenua
Kohutapu Lodge & Tribal Tours

Taupō
Base Taupō

Blue Duck Station (Whakahoro)
Blue Duck Lodge

National Park
Howards Mountain Lodge (Northbound)

Raetihi
Snowy Waters Lodge

Wellington
Nomads Capital (Southbound)
Base Wellington (Northbound)

South Island

Picton
The Villa Backpackers Lodge

Abel Tasman (Mārahau)
The Barn

Franz Josef
Rainforest Retreat

Wānaka
Base Wanaka

Queenstown
Nomads Queenstown

Te Ānau
Te Ānau Lakeview

Invercargill
Tuatara Lodge

Stewart Island
Stewart Island Backpackers

Mount Cook
Mount Cook Lodge

Christchurch
All Stars Inn on Bealey

Kaikōura
Dusky Lodge & Backpackers